

This Quick Start Guide is not a substitute for the detailed instructions for use included with your Accu-Chek FastClix lancing device.

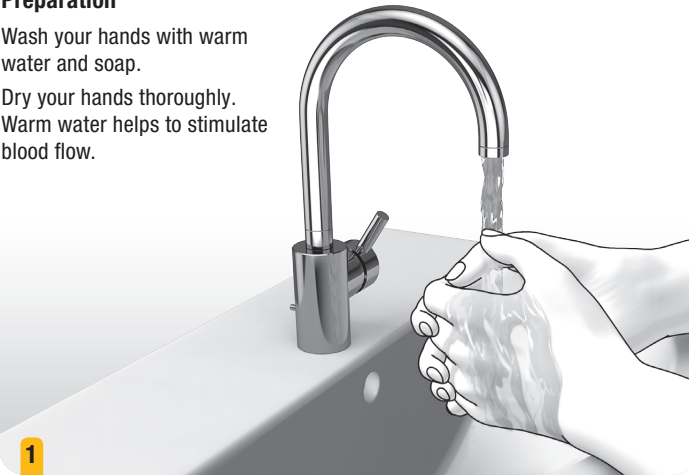
Be sure to observe the safety information in the instructions for use.

The lancing device is intended for personal use only!

Preparation

Wash your hands with warm water and soap.

Dry your hands thoroughly. Warm water helps to stimulate blood flow.



1

 Roche Diabetes Care GmbH
Sandhofer Strasse 116
68305 Mannheim, Germany
www.accu-chek.com

Manufactured in Germany for:
Roche Diabetes Care, Inc.
Indianapolis, IN 46256, USA

Accu-Chek Customer Care Service Center:
1-800-858-8072 phone
1-800-858-8074 TDD/TTY (for hearing impaired)

ACCU-CHEK and FASTCLIX are trademarks of Roche.

© 2020 Roche Diabetes Care



DE 07912951001(02) – US 07912951002

ACCU-CHEK®

ACCU-CHEK® FastClix



Lancing device
Quick Start Guide

1 - Click Action
The only 1-click
lancing device
with a drum

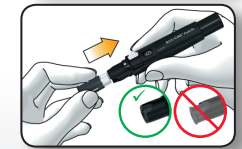
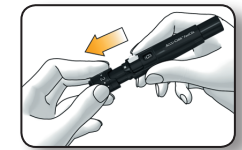
ACCU-CHEK®

Inserting a Lancet Drum

Remove cap by pulling it straight off.

Insert new lancet drum, white end first, into the lancing device until it stops and clicks into place.

Place cap back on up to the stop position.



Setting the Penetration Depth

Set penetration depth by turning comfort dial on cap.

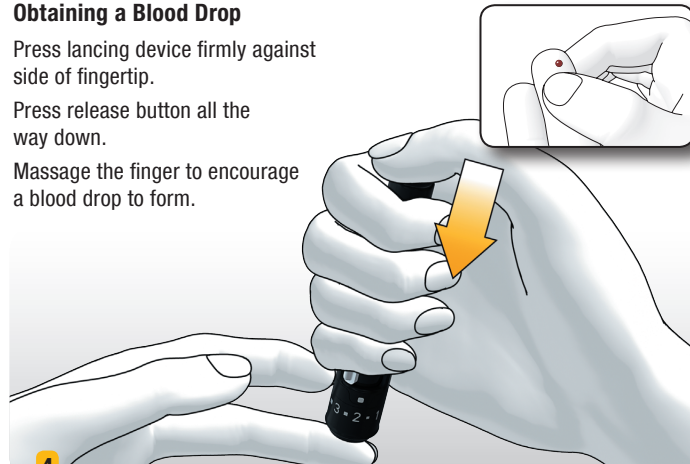


Obtaining a Blood Drop

Press lancing device firmly against side of fingertip.

Press release button all the way down.

Massage the finger to encourage a blood drop to form.

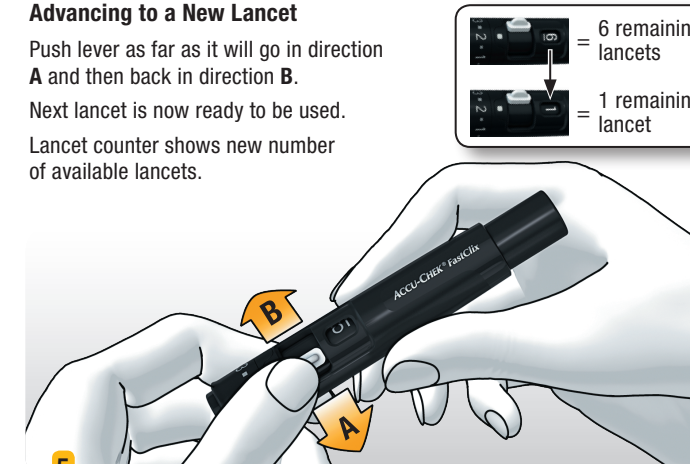


Advancing to a New Lancet

Push lever as far as it will go in direction **A** and then back in direction **B**.

Next lancet is now ready to be used.

Lancet counter shows new number of available lancets.



Replacing a Used Lancet Drum

Remove cap.

Remove lancet drum from lancing device.

A used lancet drum has a red stripe.

Insert a new lancet drum.

